

**SA  
12**

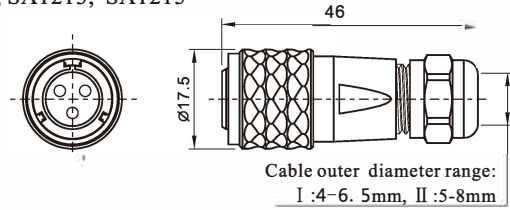
### SA12 Series



**Cable connector**  
Mate with SA1211, SA1212, SA1213, SA1215

SA1210/P — Male contact  
SA1210/S — Female contact

Colour:  
B: Black  
S: Silver  
L: Blue (special order)  
G: Green (special order)  
R: Red (special order)  
Cable outer diameter  
I : 4-6.5mm, II : 5-8mm

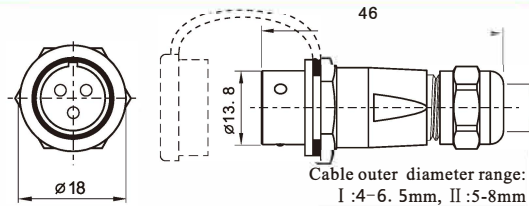


Cable outer diameter range:  
I : 4-6.5mm, II : 5-8mm



**In-line cable connector**  
Mate with SA1210

SA1211/P — SA1211/S —

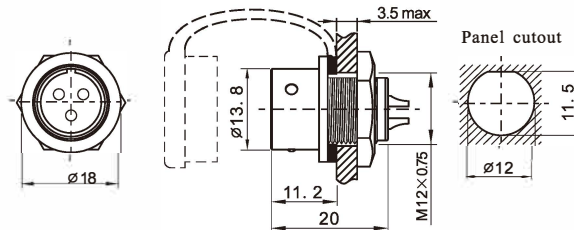


Cable outer diameter range:  
I : 4-6.5mm, II : 5-8mm



**Rear-nut mount**  
Mate with SA1210

SA1212/P — SA1212/S —

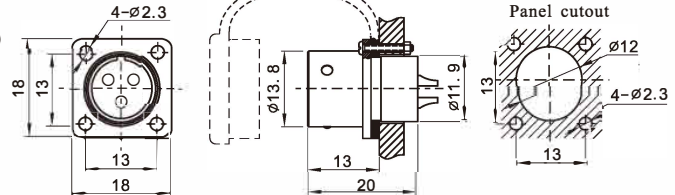


Panel cutout



**Square flange**  
Mate with SA1210

SA1213/P — SA1213/S —

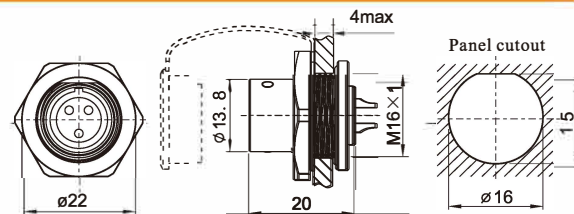


Panel cutout



**Front-nut mount**  
Mate with SA1210

SA1215/P — SA1215/S —



Panel cutout

### Solder contact spec

Number of contact	2	3	4	5	6	7	9
Male contact face view							
Rated current (A)	13	13	5	5	5	5	3
Contact diameter	Ø1.6X2	Ø1.6X3	Ø1X4	Ø1X5	Ø1X6	Ø1X7	Ø0.7X9
Rated voltage (AC.V)	250	250	200	180	125	125	125
Test voltage(AC.V) 1 min	1500	1500	1500	1000	1000	1000	1000
Contact resistance (mΩ)	2.5	2.5	5	5	5	5	10
Wire size(mm <sup>2</sup> /AWG)	≤2/14	≤2/14	≤0.75/18	≤0.75/18	≤0.75/18	≤0.75/18	≤0.5/20