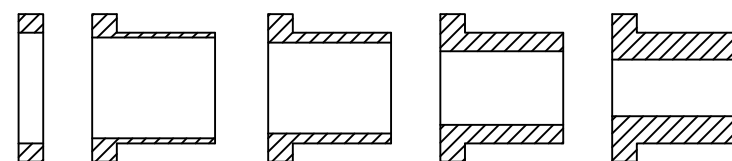
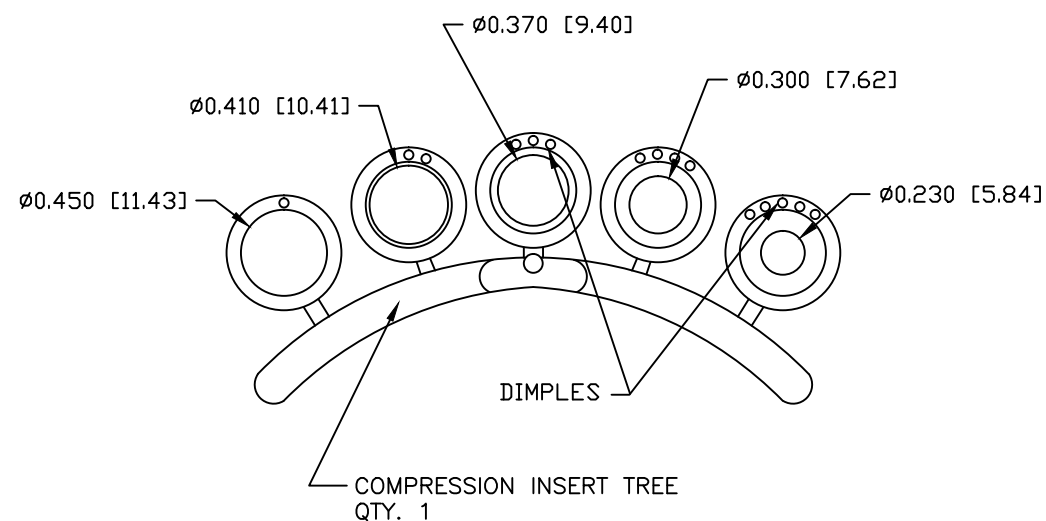
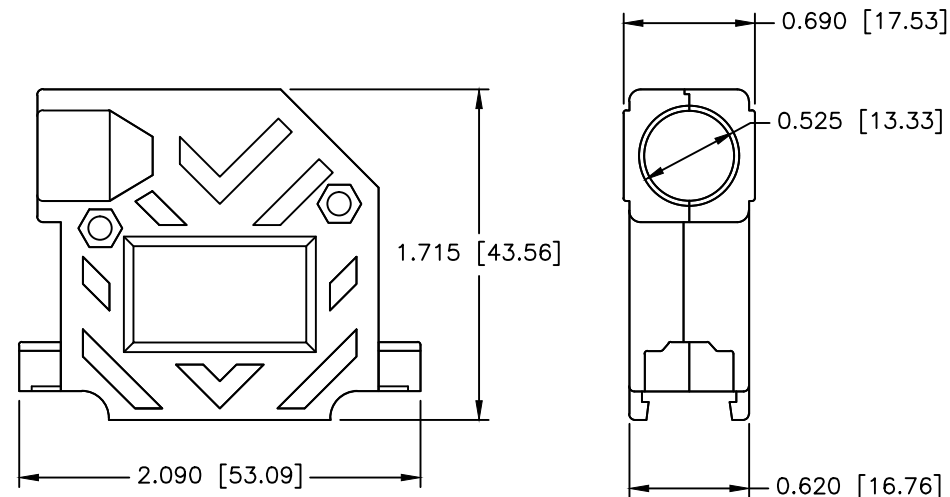
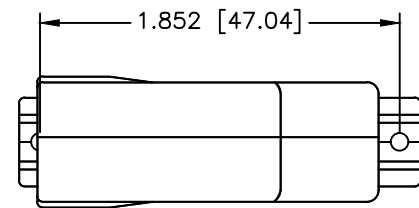

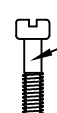



REVISIONS				
ZONE	REV	DESCRIPTION	DATE	APPROVED



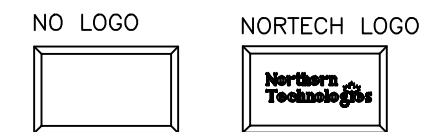
 #4-40 X 7/16" FILLISTER HEAD MACHINE SCREW  
 MATERIAL - STEEL  
 FINISH - BRIGHT ZINC  
 QTY: 2 EACH

 #4-40 #2 BLANK HEX NUT  
 MATERIAL - STEEL  
 FINISH - BRIGHT ZINC  
 QTY: 2 EACH

 #4-40 X 1/2" FILLISTER HEAD CAPTIVE SCREW  
 MATERIAL - STEEL  
 FINISH - BRIGHT ZINC  
 QTY: 2 EACH

 #4 SADDLE WASHER  
 MATERIAL - STEEL  
 FINISH - BRIGHT ZINC  
 QTY: 2 EACH

THIS IS A CONTROLLED DOCUMENT AND IS SUBJECT TO CHANGE. CONTACT NORTHERN TECHNOLOGIES ENGINEERING FOR THE LATEST REVISION.



PART NUMBER INFORMATION

PART#	LOGO STYLE	SUPPLIED
NA30E420000	NO LOGO TOP COVER	BULK
NA30E421000	NORTECH LOGO TOP COVER*	BULK
NA30E420100	BOTTOM COVER	BULK
N88E420000	NO LOGO	PACKAGED
N88E421000	NORTECH LOGO*	PACKAGED


\*CONTACT NORTHERN TECHNOLOGIES

CONNECTOR COVER:

- 1.MATERIAL: ZINC ALLOY
- 2.FINISH: NICKEL OVER COPPER UNDER-PLATE PER NTC SPECIFICATION N/T 000400
- 3.DIMENSIONS: INCHES [MM]
- 4.TOLERANCE: ±0.015 [0.381]

COMPRESSION INSERT TREE

- 1.MATERIAL: THERMOPLASTIC
- 2.COLOR: BLACK
- 3.DUROMETER: 75 ±5 TYPE A PER ASTM D2240
- 4.DIMENSIONS: INCHES [MM]
- 5.TOLERANCE: ±0.020 [0.508]

UNLESS OTHERWISE SPECIFIED 1. ALL DIMENSIONS ARE IN INCHES (MM) 2. DIMENSIONS ARE TYPICAL					THIS DRAWING IS THE PROPERTY OF NORTHERN TECHNOLOGIES AND SHOULD NOT BE REPRODUCED WITHOUT NORTHERN TECHNOLOGIES WRITTEN PERMISSION.	
DRAWN JSD		02-JAN-13		PART NUMBER SEE PART NUMBER INFORMATION		
CHECKED SCN		02-JAN-13		DESCRIPTION CMR 25 RIGHT ANGLE COVER NICKEL PLATED		
ISSUED		02-JAN-13		SIZE B	CODE 200_106N	DWG NO. 0002-200-106N
SCALE 1:1				SHEET 1 OF 1		