

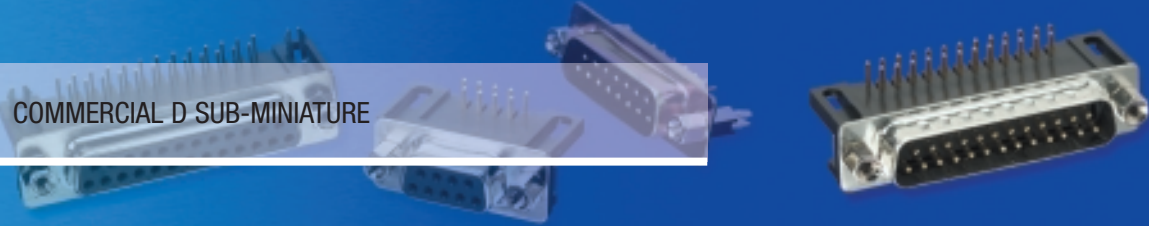


IN2CONNECT
ELECTRONIC CONNECTORS

D range connectors

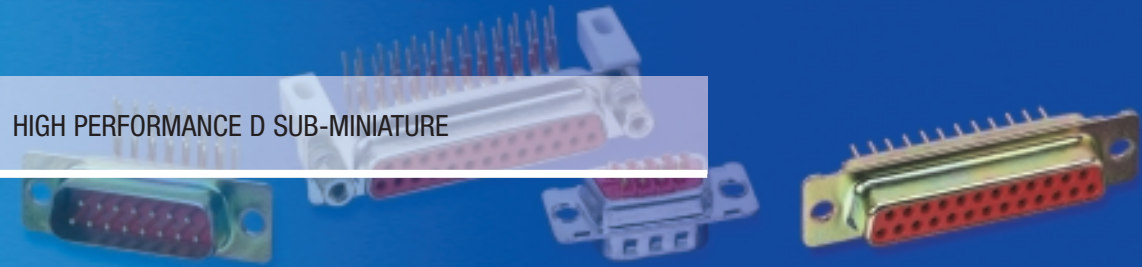
Special D

COMMERCIAL D SUB-MINIATURE



Standard D

HIGH PERFORMANCE D SUB-MINIATURE



Crimp D

FLEXIBLE AND FAST ASSEMBLY D SUB-MINIATURE



High Density D

INCREASED DENSITY D SUB-MINIATURE



D Accessories

Please note that "Budget" plating has been discontinued on all of the ITW McMurdo dsub ranges.

Special D

A range of D connectors utilising stamped and formed or turned contacts to provide a low cost option for commercial applications.

COMMERCIAL D SUB-MINIATURE



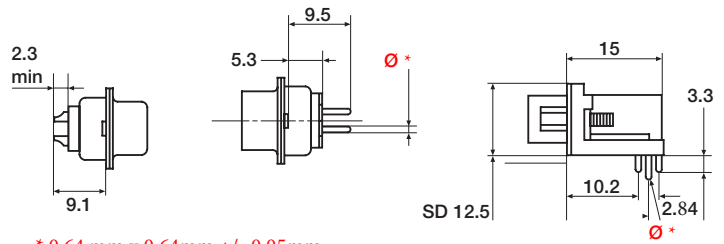
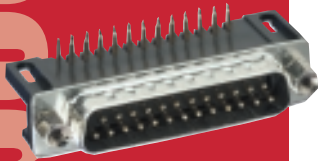
FEATURES

Choice of three termination styles – solder bucket, straight p.c. and 90° p.c.

Optional solderable boardlock features for 90° p.c. types – reduces installation time.

Threaded inserts on 90° p.c. versions as standard – accepts a wide range of mounting hardware.

Tinned and dimpled shell options – for EMI/RFI shielding.



* 0.64 mm x 0.64mm +/- 0.05mm

Solder Bucket

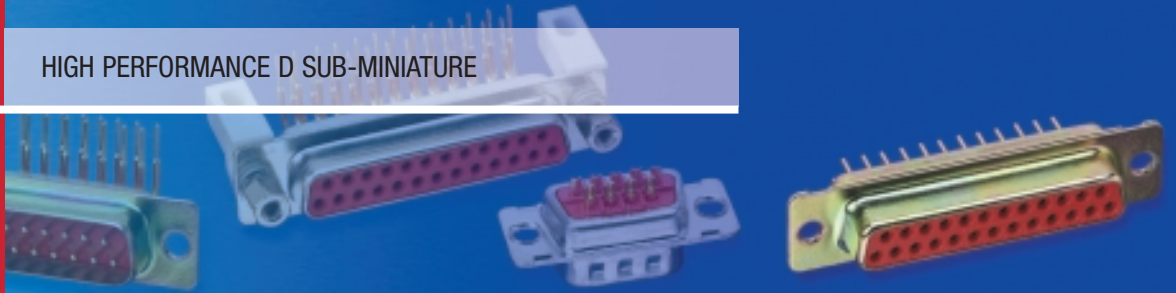
Straight P.C.

90° P.C.

Standard D

Designed for demanding industrial applications, McMurdo's D connectors offer precision turned contacts. Standard D offers a minimum of 500 cycles

HIGH PERFORMANCE D SUB-MINIATURE



FEATURES

Standard D meets the most demanding requirements.

Available in five shell sizes, providing up to 50 contacts.

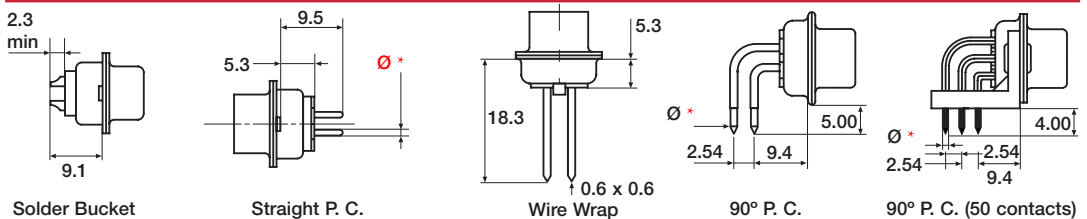
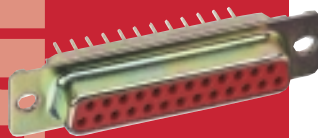
Tinned and dimpled shell options – for EMI/RFI shielding.

Precision turned contacts. European Footprint

Solder bucket, straight p.c., 90° p.c. and wire wrapping termination styles – to suit all your applications.

Wide range of accessories – greater user flexibility.

* 0.64 mm x 0.64mm +/- 0.05mm



Solder Bucket

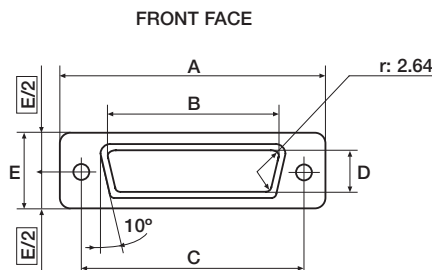
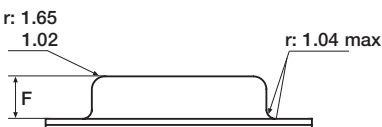
Straight P.C.

Wire Wrap

90° P.C.

90° P.C. (50 contacts)

All ranges: male



No. of contacts	A	B	C	D	E	F
9	31.19	17.04	25.12	8.48	12.93	6.12
	30.43	16.79	24.87	8.23	12.17	5.82
15	39.52	25.37	33.45	8.48	12.93	6.12
	38.76	25.12	33.20	8.23	12.17	5.82
25	53.42	39.09	47.17	8.48	12.93	5.99
	52.65	38.84	46.91	8.23	12.17	5.69
37	69.70	55.55	63.63	8.48	12.93	5.99
	68.94	55.30	63.37	8.23	12.17	5.69
50	67.34	52.93	61.24	11.33	15.75	5.99
	66.55	52.68	60.99	10.95	14.99	5.69

Crimp D

Maximum flexibility and reduced assembly costs are achieved through full or partial loading of selectively plated stamped and formed contacts.

FLEXIBLE AND FAST ASSEMBLY D SUB-MINIATURE



FEATURES

Replaceable contacts – no connector wastage.

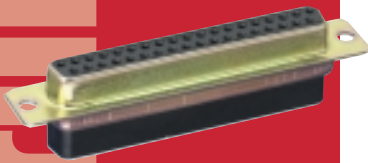
Two contact performance levels – Budget for commercial and Standard for industrial applications.

Accepts wire sizes of 20 to 28 AWG – offers greater flexibility.

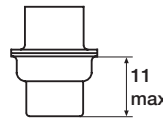
Tinned and dimpled shell options – for effective EMI/RFI shielding.

Complete selection of crimp tooling enables quick assembly.

Wire strip length 2.4 ± 0.2mm.



ASSEMBLY TOOLS AND HAND TOOLS



Crimp

Hand Crimp Tool MP600-D/HD
Insertion/extraction tool MP601-D or MP601-HD

High Density D

Increased contact density is provided in five industry standard shell sizes providing up to 78 contacts. A choice of four termination styles including crimp are available making this range one of the most versatile.

INCREASED DENSITY D SUB-MINIATURE



FEATURES

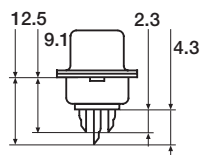
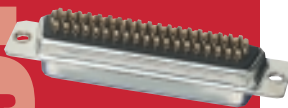
Tinned and dimpled shell as standard for enhanced electrical continuity and effective EMI/RFI shielding.

Threaded inserts – enable quick assembly of mounting hardware to 90° p.c. versions.

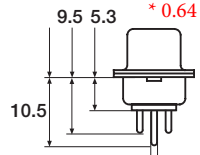
Optional screwlocks and solderable boardlocks fitted to 90° p.c. versions.

Solder bucket, straight p.c. 90° p.c. and crimp termination styles.

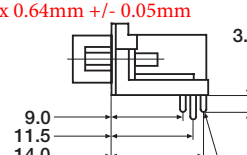
Compatible with Standard D range accessories.



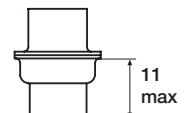
Solder Bucket



Straight P.C.

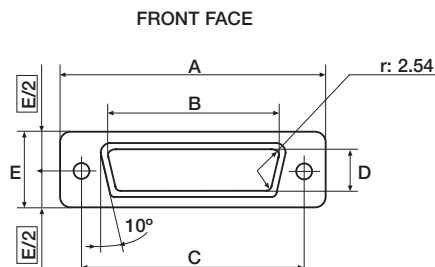
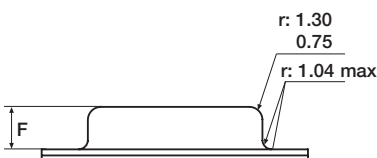


90° P.C.

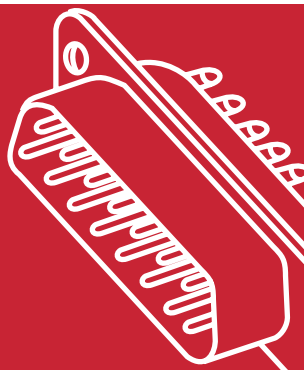


Crimp

All ranges: female



No. of contacts	A	B	C	D	E	F
9	31.19	16.46	25.12	8.03	12.93	6.30
	30, 43	16.21	24.87	7.77	12.17	6.05
15	39.52	24.79	33.45	8.03	12.93	6.30
	38.76	24.54	33.20	7.77	12.17	6.05
25	53.42	38.51	47.17	8.03	12.93	6.30
	52.65	38.25	46.91	7.77	12.17	6.05
37	69.70	54.97	63.63	8.03	12.93	6.30
	68.94	54.71	63.37	7.77	12.17	6.05
50	67.34	52.56	61.24	10.87	15.75	6.30
	66.55	52.30	60.99	10.62	14.99	6.05



Technical Data

FEATURES

- Shell
- Insulator
- Contact
- Termination – solder bucket
- straight PC
- 90° PC

MECHANICAL

- Operations
- Temperature range

ELECTRICAL

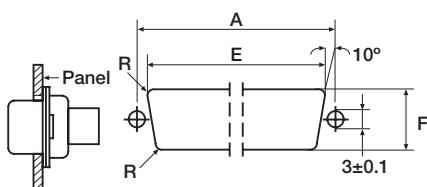
- Current – individual contact (in isolation) at 70°C
- All contacts (simultaneously) at 70°C
- Working voltage (DC or AC PEAK)
- Proof voltage (DC or AC PEAK)
- Contact resistance
- Insulation resistance

D range connectors

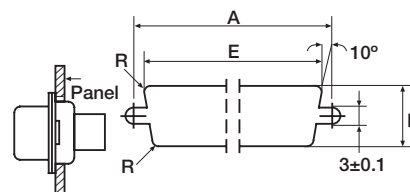
	Special D	Standard D	Crimp D	High Density D
	Tin plated steel shell			
	Thermoplastic rated UL94V-0			
	Copper alloy plated hard acid gold			
	Tin or Selective Gold	Gold	–	Tin or Selective Gold
	Selective Gold	Gold	–	Selective Gold
	Tin or Selective Gold	Gold	–	Tin or Selective Gold
	100	500 (standard)	500 (standard)	100
	-55°C to +105°C			
	3A	6.5A	3A	3A
	2A	3.3A	2A	2A
	350V	500V	350V	300V
	1500V	1500V	1500V	1000V
	15mΩ max	10mΩ max	15mΩ max	15mΩ max
	5000mΩ min	1000mΩ min	5000mΩ min	1000mΩ min

All ranges: panel mounting options

Shell size	No of Contacts D,SD	Contact Arrangement			Rear Panel Mounting				Front Panel Mounting				
		HD	A	E	Std	Float	Std	Float	R	Std	Float	Std	Float
E	9	15	25.00	20.32	21.16	11.30	12.09	3.50	22.07	22.88	12.90	13.71	2.25
A	15	26	33.32	28.70	29.49	11.30	12.09	3.50	30.40	31.22	12.90	13.71	2.25
B	25	44	47.04	42.42	43.20	11.30	12.09	3.50	44.14	44.96	12.90	13.71	2.25
C	37	62	63.50	58.93	59.77	11.30	12.09	3.50	60.60	61.42	12.90	13.71	2.25
D	50	78	61.10	56.26	57.02	13.97	14.78	3.50	58.21	59.44	15.69	16.51	2.25



Rear Panel Mounting

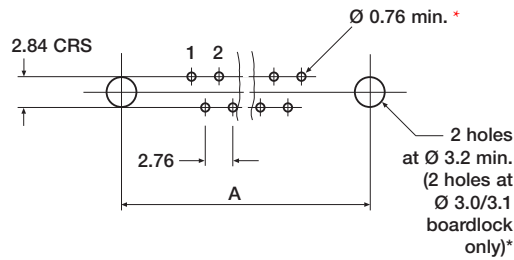


Front Panel Mounting

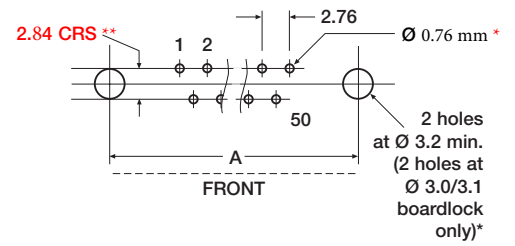
PCB layouts

Plug viewed from above,
socket viewed from below.

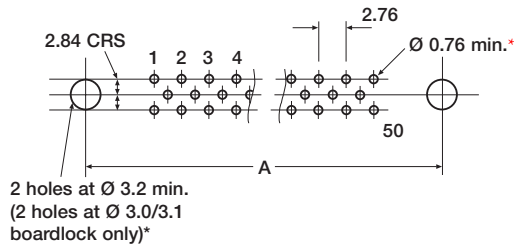
Straight p.c. 9-37 way



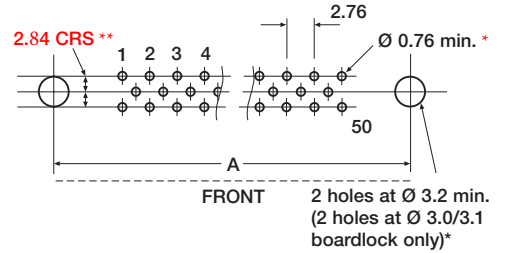
90° p.c. 9-37 way



50 way



50 way



DIMENSIONS

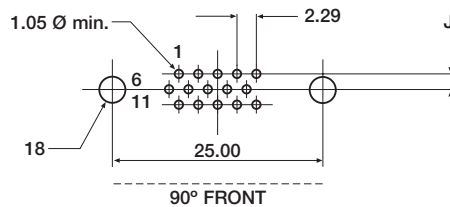
Contact Arrangement	A crs
9	25.00
15	33.32
25	47.04
37	63.50
50	61.10

* 1.05 mm for **Special D**
** 2.54 mm for **Standard D**

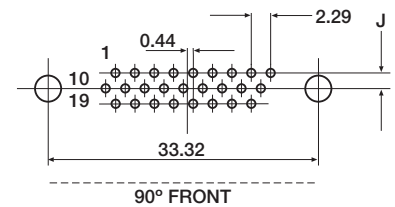
High Density D only

Plug viewed from above,
socket viewed from below.

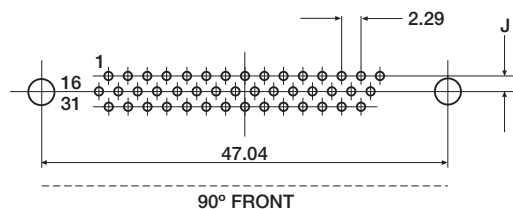
15 way High Density D



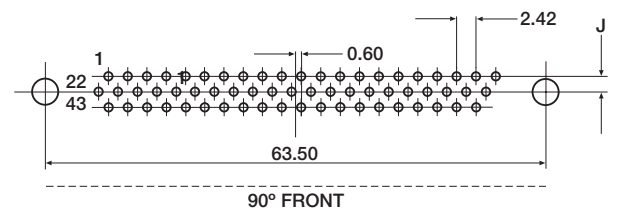
26 way High Density D



44 way High Density D



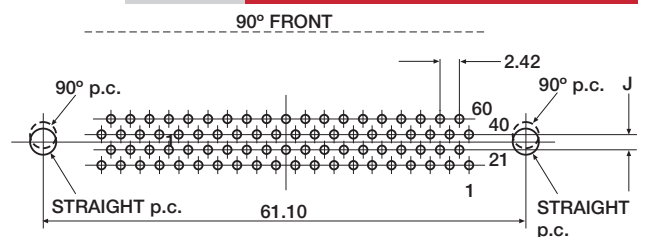
62 way High Density D



DIMENSIONS

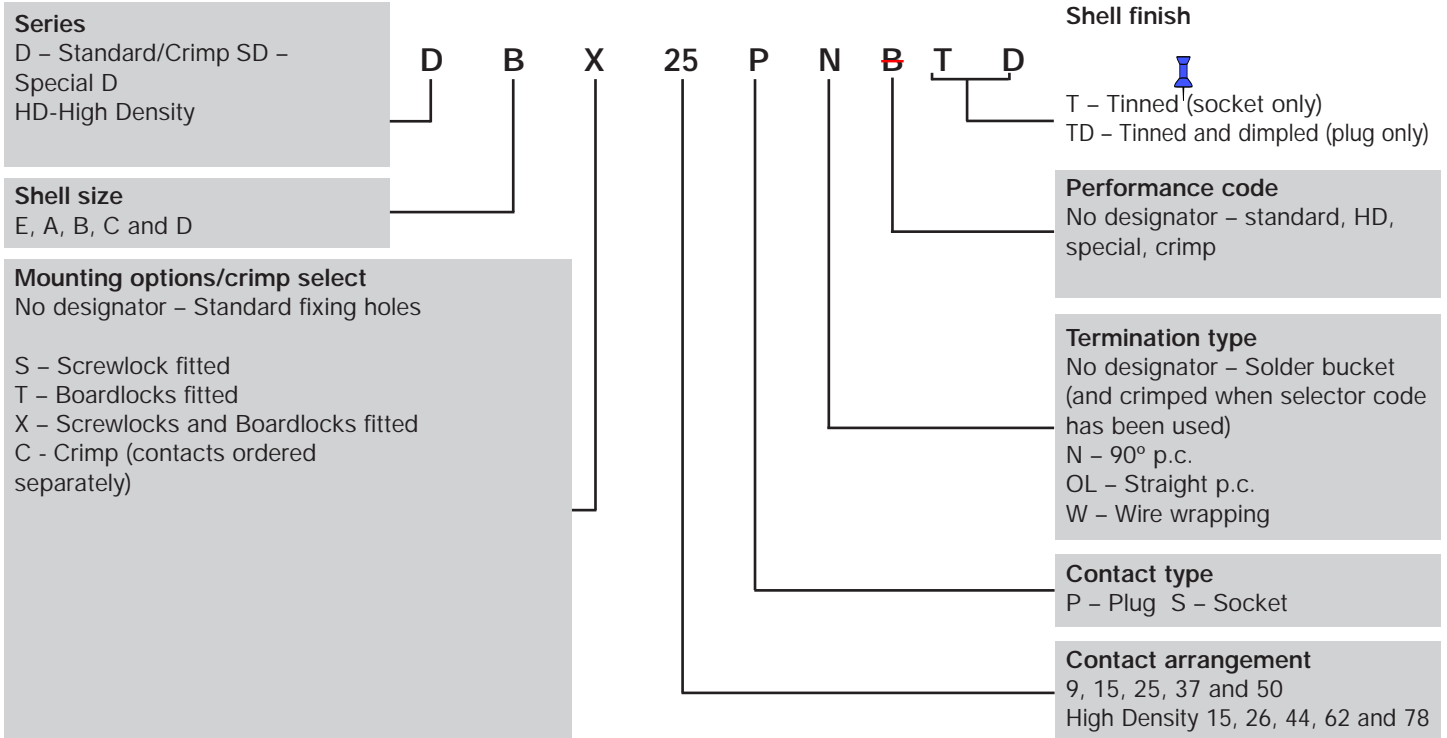
Contact Arrangement	Straight p.c. J	90° p.c. J
15	1.98	2.54
26	1.98	2.54
44	1.98	2.54
62	1.98	2.54
78	2.08	2.54

78 way High Density D

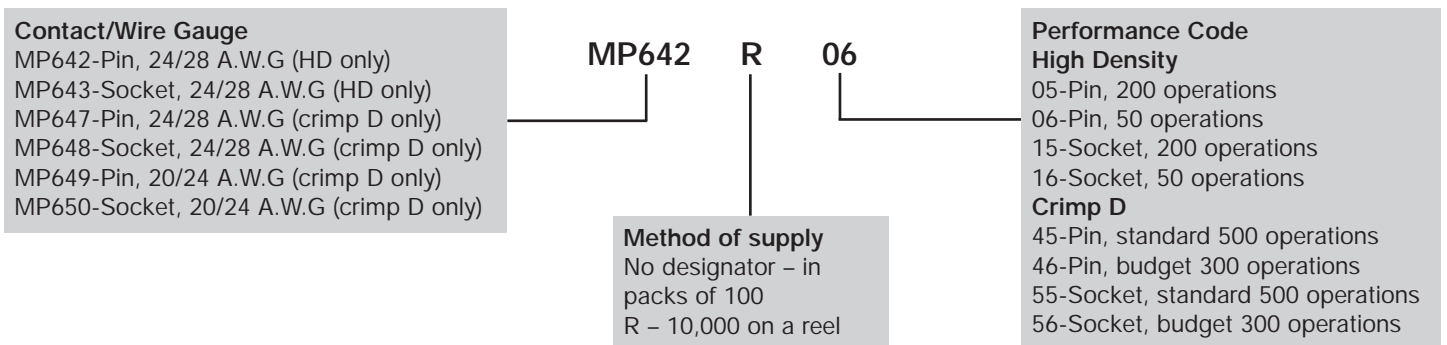


ORDERING information

for CONNECTORS

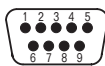


CONTACT ORDERING INFORMATION

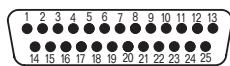


CONTACT ARRANGEMENT (viewed from mating face of male connector)

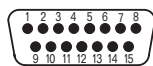
Special, Standard and Crimp D



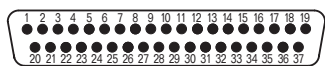
E - 9 contacts



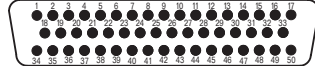
B - 25 contacts



A - 15 contacts

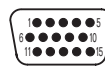


C - 37 contacts



D - 50 contacts

High Density D



E - 15 contacts



B - 44 contacts



A - 26 contacts



C - 62 contacts



D - 78 contacts

Accessories

A range of accessories are available including automatic and hand crimp tools, insertion and extraction tools – ask our sales office for details.

Due to our policy of continuous product development, ITW McMurdo Connectors retain the right to change the specification at any time without prior notice. Designed & printed in the UK.

Tel: +44 (0)1962 773004

Fax: +44 (0)1962 773104

sales@in2connect.uk.com

<www.in2connect.uk.com>

ITW **McMurdo**
Connectors