

Contact assignment:

- 1) brown
- 2) white
- 3) blue
- 4) black
- 5) green-yellow

Contact assignment:

- 1) white
- 2) brown
- 3) green
- 4) yellow
- 5) grey
- 6) pink
- 7) blue
- 8) red

Technical specification:

Rated voltage: IEC 61076-2-101 4pos 250 V 5pos 60 V 8pos 30 V

Current rating: IEC 61076-2-101 4/5pos 4 A at 40°C 8pos 2 A at 40°C

Insulation resistance: IEC 60512 >=100 MΩ

Pollution degree: IEC 60664-1 3/2

Degree of protection: IEC 60529 IP 67, in mated condition

Temperature range: -30°C ... +80°C

Mating cycles: IEC 60512-9a >=100

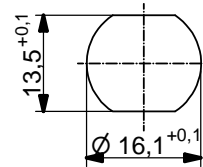
Materials:

- Contact: CuZn
- Contact plating: Nickel, gold plated
- Contact carrier: PBT GF, UL 94
- Sealing connector chassis: FPM NBR
- Counternut: CuZn, nickel plated
- Socket housing: CuZn, nickel plated
- Grouting: Polyurethane-resin, UL 94

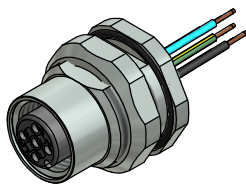
Installation specification:

recommended torque: 1-1,2 Nm

Conec installation tool: Torque wrench: 36-000200 Insert across flats 19: 36-000250



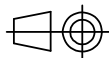
Minimum wall thickness 1,5mm, alternativ panel cut-out d=16,1



Part no:	Description:	Pos	Length L:	Wire:
43-01003	SAL - 12 - FKH4 - 0,5	4	0,5m	AWG 24 PVC, UL
43-xxxxx	SAL - 12 - FKH4 - ...	4	x	
43-01004	SAL - 12 - FKH5 - 0,5	5	0,5m	
43-xxxxx	SAL - 12 - FKH5 - ...	5	x	
43-01005	SAL - 12 - FKH8 - 0,5	8	0,5m	
43-xxxxx	SAL - 12 - FKH8 - ...	8	x	

DO NOT ALTER CAD DRAWING BY HAND
Directive 2002/95/EC RoHS compliant

Index: c 23.11.12 MG Ä4555
Data sheet revised, technical specification changed, materials corrected



dim. in mm

title:
Female socket M12x1 with wire, backmounting

tolerance of wire: L <= 0,5m: L + 20mm
L > 0,5m: L + 4%

	date	name
drawn	20.02.07	Fromm
appd.	01.03.07	Mankopf

dwg no:

general tolerance: 0 ± 0,50mm
0,0 ± 0,25mm
0,00 ± 0,10mm



43K1A216

THIS DRAWING MAY NOT BE COPIED OR REPRODUCED IN ANY WAY, AND MAY NOT BE PASSED ON TO A THIRD PARTY WITHOUT WRITTEN PERMISSION. OWNERSHIP AND COPYRIGHT OF CONEC GmbH

part no: **see table**